



Georgia's  
**State Water Plan**

**Middle Ocmulgee Water Planning Council  
Council Meeting 4, November 16, 2009  
Resource Assessment Handouts**

[www.georgiawaterplanning.org](http://www.georgiawaterplanning.org)

# **State Water Plan**

## **Surface Water Availability Assessment**

Georgia EPD

Hydrology Unit

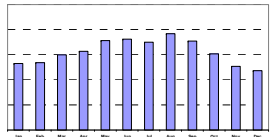
October 27, 2009

# Overarching Questions

- How much water are we using?
- How much water has Mother Nature provided us?
  - How much water is naturally available?
- How much water can we reliably use without compromising the in-stream flow needs?
  - What are the in-stream flow needs?
  - How much water use can be sustained subject to these needs?

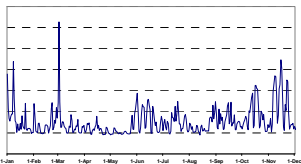
## Demand Data Compilation

\* Contractor (EPD Assistance)



## Observed Flow Data Compilation

\* Contractor



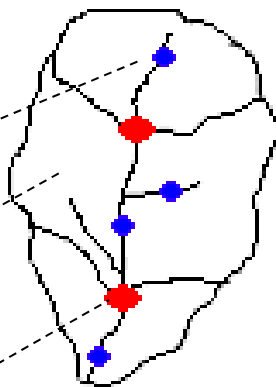
## River Basin Delineation

\* EPD

Basic Node

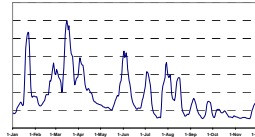
Sub-basin

Planning Node



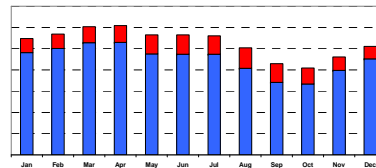
## Unimpaired Flow Data Development

\* Contractor



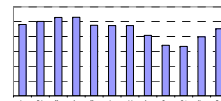
## Resource Assessment Current

\* Contractor (EPD)



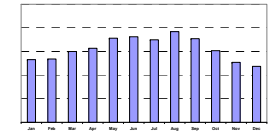
## Desired Flow Regime

\* EPD



## Future Demands

\*EPD



## Future Assessment (Planning)

\* EPD/ Contractor



Information

## Best Practices Selection and Refinement

\* Regional Councils

River Basin  
Planning Tool  
Georgia Tech Water  
Resources Institute



# Definitions

- Unimpaired flow:
  - Natural flow
    - No reservoir regulations,
    - No reservoir evaporations, and
    - No withdrawals and returns by water users
  - Used for all water resources analyses

# Definitions

- Desired “Flow Regime”
  - A description of the pattern of flow variability for an individual surface water source
  - Flow Regime involves the magnitude, timing, duration, frequency and rate of water movement

